

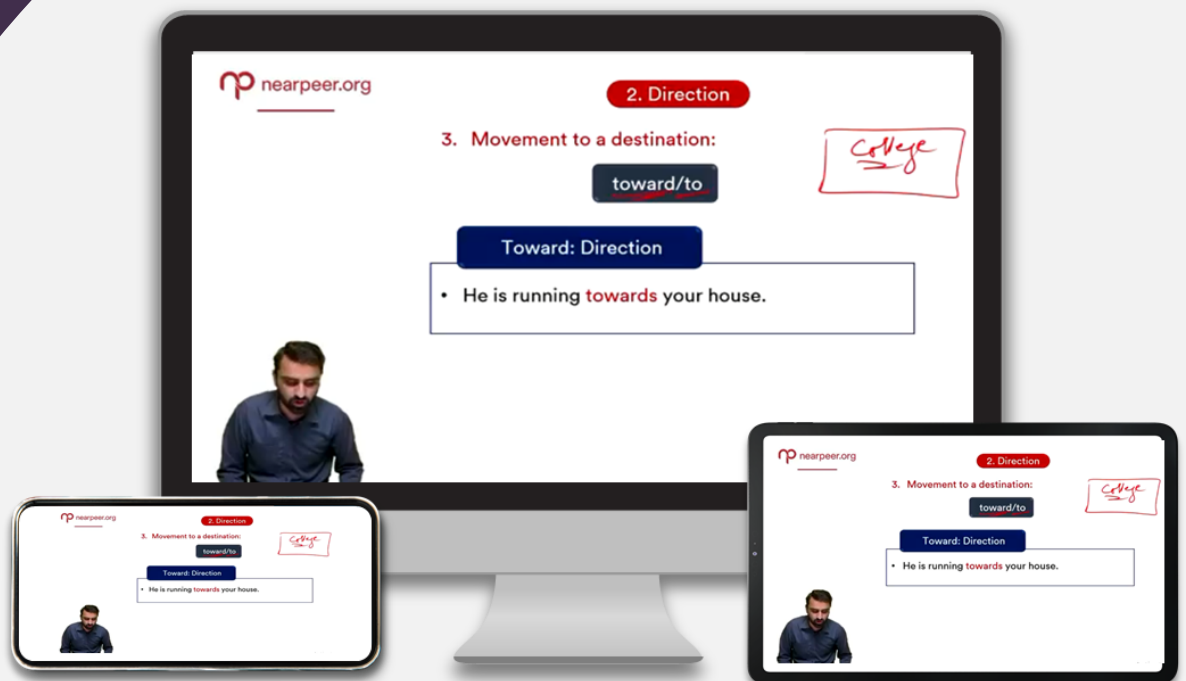
MDCAT

English

Quick Practice Book

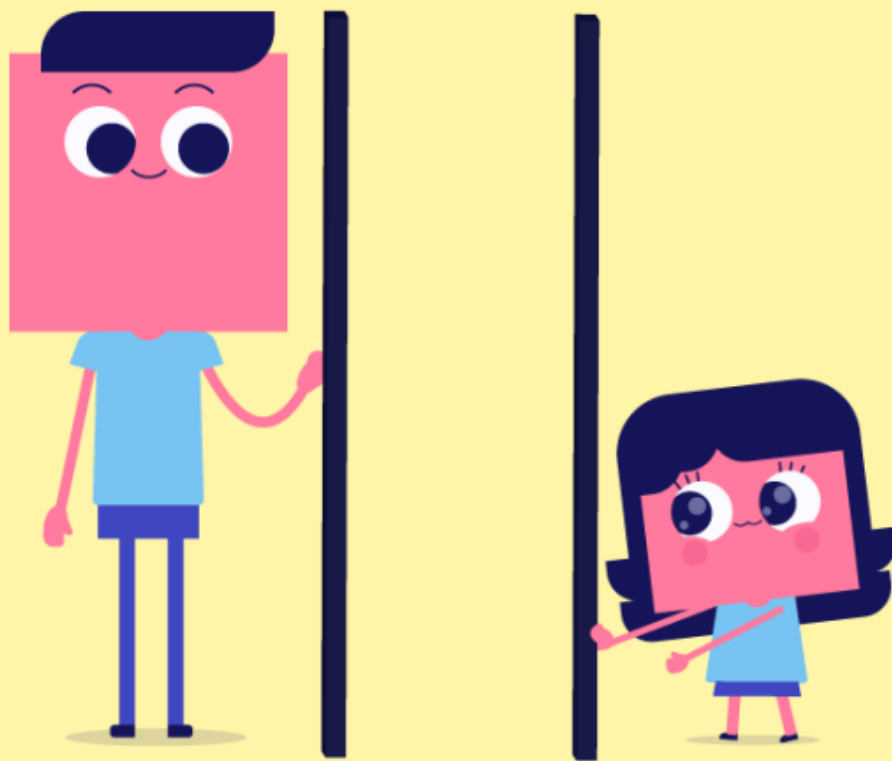
www.nearpeer.org

Oldest, Largest and Most Credible Platform



Chapter 12

Parallelism



Parallelism

Parallel structure is the same pattern of words to show that two or more ideas have the same level of importance.

- Sentence elements that are alike in function should also be alike in construction.
- These elements should be in the same grammatical form so that they are parallel.

Levels of Parallelism

1. Word Level
2. Phrase Level
3. Clause Level

1. Word Level:

Parallel	Not Parallel
Ali is fond of playing, sleeping and eating.	Ali is fond of playing, sleeping and to eat.
He welcomed us gracefully and honorably.	He welcomed us gracefully and with honor.
Waris is an intelligent and sharp boy.	Waris is an intelligent and quickly thinking boy.

2. Phrase Level:

Parallel	Not Parallel
Playing cricket and using cell phone are two different activities.	Playing cricket and to use cell phone are two different activities.
The dog ran across the yard, jumped over the fence, and sprinted down the alley.	The dog ran across the yard, jumped over the fence, and sprinted away.
Initial trials showed that exposure to the chemical caused memory problems, intermittent dizziness, and insomnia.	Initial trials showed that exposure to the chemical caused memory problems, intermittent dizziness, and deters sleep.

3. Clause Level:

Parallel	Not Parallel
The report card stated that the student often talked in class, that he bullied other students, and that he rarely finished his homework.	The report card stated that the student often talked in class, that he bullied other students, and rarely finished his homework.
The report card stated that the student often talked in class, bullied other students, and rarely finished his homework.	

Rules for Making the Elements Parallel in a Sentence

Rule 1:

Use Parallel structure with coordinating conjunctions especially “and”, “but” and “or”.

Coordinating Conjunctions

For, And, Nor, But, Or, Yet, So

Example:

- Cooking and swimming are his hobbies.

Rule 2:

Use parallel structure with elements in lists or in a series.

Example:

- Ali wanted to get money, power and security.

Rule 3:

Use parallel structure with elements being compared.

Example:

- Ali likes swimming more than playing.

Rule 4:

Use parallel structure with elements joined by a linking verb or a verb of being.

Forms of "To Be"	States of being	Senses
Is	Appear	Feel
Am	Become	Look
Are	Grow/ turn	Smell
Was	Stay/ remain	Sound
Were	Seem	Taste

Example:

- What you wish is what you get.

Rule 5:

Use parallel structure with elements joined by correlative conjunction.

Examples:

- He is either going to stay away or coming back to home.
- Ayesha is not only an intelligent girl but also a respectful student.